

**ITEM 5. ITEM FOR COMMITTEE INFORMATION – TEMPORARY ROAD
CLOSURE – HILLSONG CHURCH CHRISTMAS FESTIVAL**

TRIM RECORD NO: 2014/340240

RECOMMENDATION

The Committee note that the Hillsong Church Christmas Festival planned for 14 December, 2014 will not be proceeding this year.

DECISION

BACKGROUND

The Hillsong Church at Waterloo applied for the temporary road closures of Young and Danks Streets for the Hillsong Church Christmas Festival on Sunday 14 December 2014 from 6am to midnight.

This item was deferred at the September meeting to allow the Applicant to:

- prepare and submit a Traffic Management Plan (TMP) to the RMS for review and approval;
- seek approval from the Transport Management Centre (TMC) for the proposed Special Event Clearways; and
- update the Traffic Control Plan (TCP) to reflect the feedback provided by the TMC about the proposed Special Event Clearways.

COMMENTS






The Hillsong Church has advised the City by email on Friday 26 September 2014 that the event will not be proceeding for 2014.

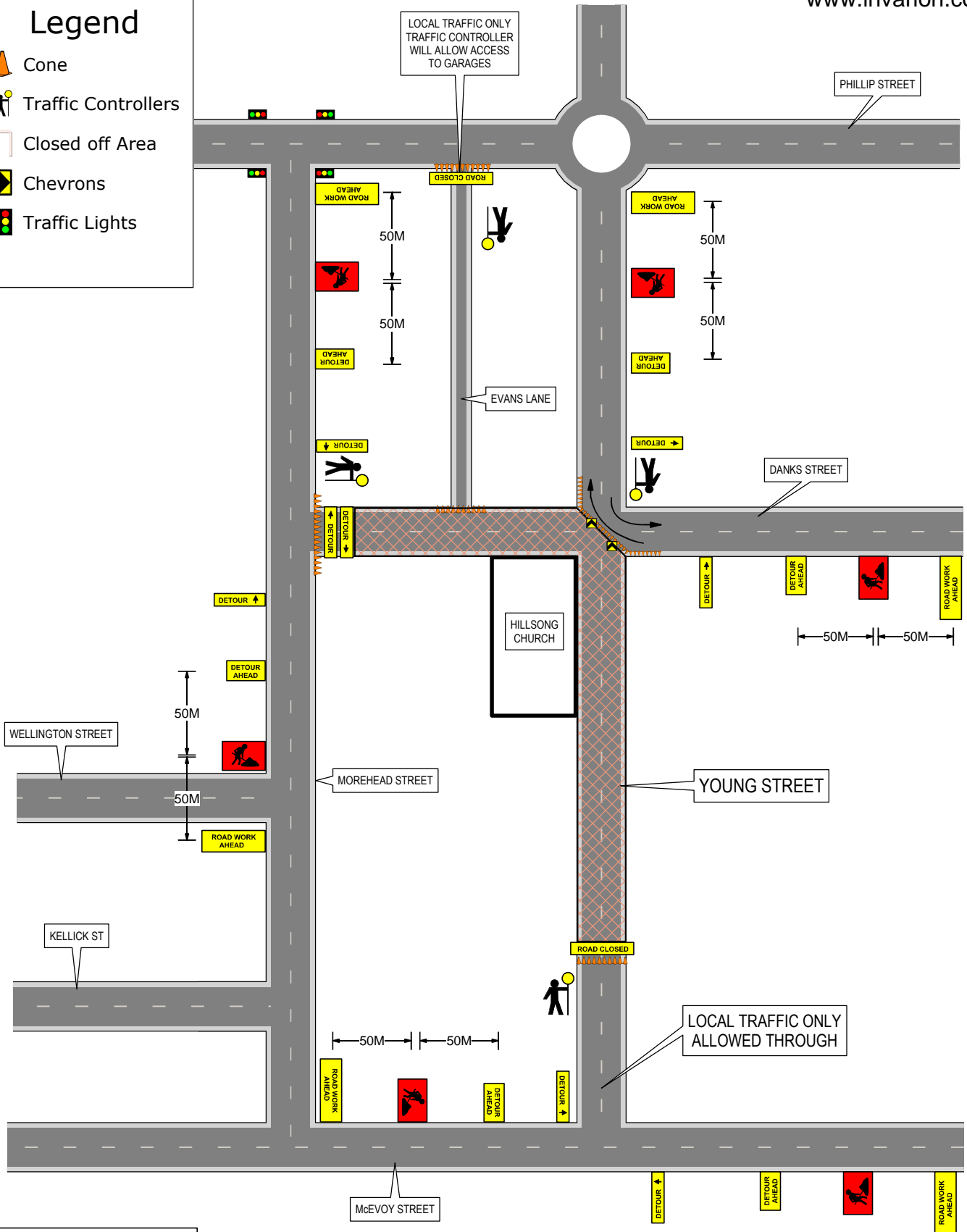
ATTACHMENTS

Street Events – Hillsong Church Christmas Festival

Claudia Calabro, Traffic Operations Coordinator

Legend

-  Cone
-  Traffic Controllers
-  Closed off Area
-  Chevrons
-  Traffic Lights



Workforce International Pty Limited (or one of its controlled or associated entities) ("Workforce") has prepared this Traffic Control Plan for the contracting authority at its specific request. No warranties are made in relation to its accuracy or appropriateness and it is not to be provided to, or used by, or relied upon, any third party except with the express written approval of Workforce. The authority and all third parties hold harmless and indemnify Workforce in respect of any claim or loss or damage that arises in any way whatsoever from, or in any way connected to, this traffic plan.



Date: 20 - 06 - 2011 Author: ALISON LEYDON 19533 Project: HILLSONG CHURCH
 Address: YOUNG STREET Suburb: WATERLOO

Comments:
 * ALL SIGN SPACINGS AND POSTINGS TO COMPLY WITH RTA TRAFFIC CONTROL AT WORK SITES MANUAL VERSION 4.
 * NOT TO SCALE

